



Queen Elizabeth II
1926 – 2022
We shall remember her

Photo: PA Images/Alamy

A Busy Autumn in Melford

The Big Night Out, Remembrance Sunday, Melford Movies, Half-term events and lots more featured throughout this issue

Our GP Surgery

An official inspection and a patient survey show our practice needs radical improvement
Page 8

What a great summer

Photos from the Fete and the Melford Scouts' survival camp
Pages 15 to 17

info@bespokeblindslm.co.uk



Tel: 01787 371387

BESPOKE BLINDS AND CURTAINS

— LONG MELFORD —



Made to Measure Blinds & Curtains

RollerBlinds | VerticalBlinds | VenetianBlinds | RomanBlinds | PleatedBlinds
Shutters | Curtains | Poles&Tracks | Accessories

Why Choose Bespoke Blinds

We offer a full and bespoke service
No obligation measuring and home consultation
Professional fitting service

Extensive range of curtain and blind samples
Excellent customer service
Child safety compliance to current safety laws
BBSA Members



www.bespokeblindslm.co.uk

Bespoke Blinds & Curtains
1 Brinkleys, Hall Street, Long Melford, Sudbury, Suffolk, CO10 9JR



ROBINS ROW

Insurance Brokers Since 1867

AN INDIVIDUAL SERVICE FOR ALL YOUR COMMERCIAL AND PERSONAL INSURANCE

**SPECIALISING IN MID TO HIGH VALUE HOMES,
COUNTRY HOUSES AND LISTED PROPERTIES
AND ALL COMMERCIAL INSURANCE SOLUTIONS**

TEL: (01787) 378205

EMAIL: ADMIN@ROBINSROW.COM

HALL STREET, LONG MELFORD, SUDBURY CO10 9JB

AUTHORISED AND REGULATED BY THE FINANCIAL CONDUCT AUTHORITY

Editorial

The Melford Matters team was deeply saddened by the death of our Queen after 70 wonderful years as our Monarch. But wasn't it great that the nation was able to mark her Platinum Jubilee in June in style?

Neighbourhood Plan referendum on 27th October

The Neighbourhood Plan group has been hard at work since 2016. At last, after six years, the Plan has been approved to go to a referendum – see page 22. Three cheers for that. And please be sure to use your vote.

Problems with the GP surgery

For years, many of us have been moaning about our GP practice and how difficult it is to get through to on the telephone and get an appointment. Now the official regulator of GP practices has rated it 'Inadequate', put it in 'Special Measures' and given it six months to improve – see page 8. Our lovely village deserves better healthcare than we've been getting.



But what a great village to live in...

On a happier note, in the last issue I asked for newcomers to Melford to tell us what they think of living here. Lisa Robertson wrote:

"We moved to Melford from Newton Green because we wanted a smaller house and garden, within the village and near to all its excellent facilities. Orchard Brook ticked all the boxes and we are very happy living on this estate."

The village itself offers so much to its residents and it is so well run. There never needs to be a dull moment! Opportunities to participate, volunteer and organise abound. The atmosphere everywhere is always friendly and welcoming."

More comments from new residents would be very welcome.

Please email melfordmatterseditor@gmail.com

Dave Watts, Editor

SONGS OF PRAISE

"Many thanks Mark, for a most kind, attentive and exemplary service. Nothing is too much trouble, no request unanswered, no detail left to chance. It is readily apparent, that the swift and happy conclusion to our house sale, is down to your untiringly dedicated work ethic and professionalism. I cannot commend you highly enough to others. You have been brilliant - thank you."

MRS A HARTLEY

Winkworth

01787 326740
longmelford@winkworth.co.uk

The Stables, Hall Street,
Long Melford, CO10 9JT

Established 1835 with 100 high street offices nationwide



Community Matters

Big Night Out: 11th November

There was a lot of uncertainty around whether the traditional Big Night Out firework display would take place at Melford Hall this year. Project Seven, which has run the event in the Hall's grounds for the last 48 years, was disappointed to learn that the National Trust had refused to grant a licence for the event to be held.

Many supporters of the Big Night Out and local residents were very upset to hear the news and wrote to the National Trust expressing their concerns and many cancelled memberships of the Trust. There was also a protest event on the Green opposite Melford Hall on 25th August.

After a few meetings and negotiations, the National Trust has agreed to grant the licence for the event to go ahead this year. The Trust and Project Seven have agreed that there won't be a bonfire this year, for both financial and environmental reasons.



A protest event was held outside Melford Hall in August
Photo: Holly Warren-Jones

The event will be on Friday 11th November and Project Seven hope for a really good turn-out as all the proceeds are distributed back into the community via local charities and organisations. For more details and tickets, see www.projectsevenuk.co.uk/big-night-out

As for 2023 events in Melford Hall grounds, Amy Hyde Parker said "The finer details are being negotiated to ensure that all events can continue."



Important Awards For Two Melford Businesses

Many congratulations to Graham Hessel, owner of the **Melford Antiques, Interiors & Lifestyle Centre** and to Farley Boxall, co-founder of **Breakout**. Both were judged to have come top in their categories for London and the South-East at the Prestige Business Awards. Graham won the accolade of the Best Antiques Store/Centre of the Year award while Farley was the winner of the Best Co-working Business.

It's a wonderful achievement for these two relatively new businesses. The Centre, which opened less than two years ago, is home to over 60 independent antique dealers and other retailers whose displays are varied and ever-changing. Breakout has been up and running for just over a year. It provides workspaces and support services for small local businesses and others. These are two businesses Melford can be especially proud of.



The Melford Antiques, Interiors and Lifestyle Centre, and Breakout, received top prize in their respective categories in the Prestige Business Awards for London and the South-East

Community Matters

Melford Hall Looks to the Autumn

Our open season this year has had a great spring and summer – we’ve welcomed lots of visitors.

Throughout this year, we’ve worked with some of our local schools and Curious Spark (a local heritage, arts and cultural education company which aims to engage communities with local history using interactive experiences). The theme for our project is ‘Putting on a Progress’. It brings to life the 1578 Progress of Queen Elizabeth I through Suffolk and Norfolk, which included a visit to Melford Hall.

In the half-term week in late October (exact dates to be confirmed), Curious Spark will be offering visitors to Melford Hall the chance to step back into 1578 and immerse themselves in a virtual reality experience. Visitors will be able to enter this Elizabethan world where they can drop into Privy Council meetings and see entertainment laid on for the Queen.

We’ll be updating our website, so keep an eye out for dates and times: www.nationaltrust.org.uk/melford-hall



Halloween Half-Term Fun at Kentwell

A Halloweenies event for children aged 3 to 14 will be held in the half-term holiday from 22nd to 30th October in Kentwell Hall’s grounds.

Activities include: Making a Wand, Attending Sorcery School, the Broomstick Challenge, Following the Heffalump Trail through the grounds, Exploring Secret Tunnels, Dancing to the Piper in the Magic Circle, plus much more.

Children are welcome to dress up in Halloween or any other costumes and must be accompanied by an adult.

Advance booking is essential as numbers are limited. See www.kentwell.co.uk/events/halloweenies



A witch consulting her book of spells

Melford Good Neighbours – How We’ve Helped

Do you know just how much of a difference the team of 25 Good Neighbours volunteers makes to



others in the village? In 2021, we supported 87 different people in our Parish. We:

- made 317 medical supporting trips (eg taking people to appointments, collecting prescriptions, etc)
- completed 239 trips to social activities (eg to coffee mornings)
- took villagers on 20 other trips for such things as shopping or accessing their finances
- carried out 7 DIY jobs
- helped out in 7 gardens.
- gave IT support to 2 people and helped with form filling for another.
- made 243 befriending telephone calls
- made 2 face-to-face befriending visits (the low number was due to Covid restrictions)
- held 11 Coffee Mornings supported by the Friends of the Library, with an average of 21 people attending.

If you’d like to join our team, or need help from our volunteers, please call us on 07504 249179. Please leave your details and someone will get back to you.

Community Matters

Terrence the Terrier is 2000 Years Old

A recent archaeological excavation at Melford's football ground has revealed some exciting discoveries. Perhaps the most interesting for the layman was finding the skull of a 2,000-year-old dog. It was recovered from the foundations of a rare Iron Age Building. A local vet confirmed the skull to be of a terrier-like breed. The excavation team christened him Terrence. Dogs held a special place in the ritual of Iron Age and Roman Britain and so the location of the skull could be of particular significance.



Hard at work discovering Terrence the Terrier and other finds

During the month-long excavation 77 children from Melford's primary school visited the Heritage Trust Museum. After they had voted for their favourite exhibits, they visited the excavation site, where they were encouraged to sieve soil and identify artefacts.

Come On You Blues

The Melford branch of Ipswich Town Supporters Club runs a bus to every home league match.



It starts opposite the Cock and Bell at 1pm for 3pm and 6pm for 7.45pm kick offs and delivers fans right outside the Ground.

It costs just £10 return (£5 return for first timers) And it's comfortable, economical and fun. Phone 07930 581879 or 07818 400196 for more details.

Try us, join us, the future is bright, the future is BLUE AND WHITE!

Melford Poppies WI Garden Party

The Melford Poppies held their annual garden party at Melford Hall for the first time since 2019.



There was a traditional afternoon tea with Pimms or tea, served on the lawn in front of Melford Hall. We enjoyed a delightful duo of guitarist and singer, entertaining us in the sunshine.

We then moved into the Hall where our speaker, Oggie Weldon, displayed her handmade hats. She gave us a detailed history of hat making with demonstrations, then we got to try some on. Her top tip: never wear a hat wider than your shoulders!

Jean, Lady Hyde Parker was presented with a bouquet and thanked for once again allowing us to hold our party at Melford Hall.

Concert in Memory of Patrick Kohler

A concert by the Kingfisher Ensemble led by Beth Spendlove will be held on Saturday 8th October at 7.30pm in Holy Trinity Church. This is in memory of Patrick Kohler, the long-term chairman of Melford Music. There is no entrance fee but a collection will be held and all proceeds will go to the church.



The Silver Band – Passing on the Musical Baton

Our Musical Director (MD), Nigel Partridge, is retiring at the end of the year and we're looking for a successor. We're a friendly Band and play to a good standard. We meet weekly on Wednesdays at the Old School and have a healthy number of engagements throughout the year from fetes and community events to formal concerts.

The MD's role includes selecting the music, conducting the band and raising playing standards. If you're interested in picking up the baton, please contact Band Secretary Harry Copsey at harrycopsey@outlook.com



Community Matters

New Litter Picker Leader Needed

Long Melford Litter Pickers are looking for someone to run our group in 2023. All we need is someone willing to recce the village before each pick to identify the area where we're most needed; look after the equipment and take it to/from the meeting locations; and email members with meeting locations and times.

If you could spare a few hours a month to play a part in helping to keep Melford clean and tidy, please consider running this happy group.

Contact Julie Thomson on 01787 375329 or email Longmelfordlitterpickers@gmail.com for more information or to volunteer.



Julie Thomson and John Kimbell at the Village Fete

Intriguing Tales **LONG MELFORD HISTORICAL & ARCHAEOLOGICAL SOCIETY**

Our meetings are on the third Thursday of the month at the Old School and start at 7.30pm. Membership is £10 a year and visitors are very welcome at £3 per meeting.

20 October 2022 – Anne Grimshaw: 'Collision in the Clouds'. At a WW2 commemoration visit to France, Anne was given a pair of flying goggles and told where they were found. Unable to resist a challenge, Anne will take us on her historic voyage of discovery.

17 November 2022 – Sarah Doig: 'Beyond Hatches, Matches and Dispatches'. Local historian and author, Sarah, has searched the parish records. This evening she'll tell us stories of collapsing spires and extreme weather conditions, as well as tragic and humorous tales.

SESAW Gear Up For Christmas

The Suffolk and Essex Small Animal Welfare (SESAW) Christmas Fair returns to the Old School on **Sunday 20th November from 10am to 3pm**. There'll be a wide range of stalls with crafts and gifts for the festive season, refreshments and Jeanette's terrific Tombola.

Christmas Fair at the Library

The Friends of Long Melford Library will be holding their Christmas Fair on **Saturday 26th November, 10am to 12.30pm**. There'll be winter bulbs, fudge and delicious preserves on sale, alongside a raffle and tombola. If you haven't been to our new home at the former Royal British Legion Social Club on Cordell Road, the Fair will be a great opportunity to get into the festive spirit and help support the village's library.



Festive Long Melford



Saturday 26th November 2022

11:00am – 4:00pm

Independent Shops * Santa * Reindeer

Punch & Judy * Unicorn * Morris Dancers

Steam Engines * Silver Bands * Snow Machines

Face Painting & more

Village Christmas Tree Light Switch On

Melford Matters is a not-for-profit community initiative funded through advertising and donations. It is produced and distributed by volunteers and printed by Indigo Ross Design & Print Ltd. The magazine welcomes contributions from everyone in the village. For further information please refer to the Long Melford Village Hall website, <https://www.longmelfordvillagehall.co.uk/melford-matters>, or email the editor, melfordmatterseditor@gmail.com, or advertising team, melfordmattersadvertising@gmail.com.

Alarm Bells for the GP Practice are Ringing Loud and Clear

The results of an inspection of the Melford GP practice in July by the Care Quality Commission (CQC) are damning. The CQC is an independent regulator of health and adult social care in England and came up with the following findings.

- Are services safe? **Inadequate**
- Are services effective? **Inadequate**
- Are services caring? **Good**
- Are services responsive to people’s needs? **Inadequate**
- Are services well-led? **Inadequate**
- Overall rating **Inadequate.**

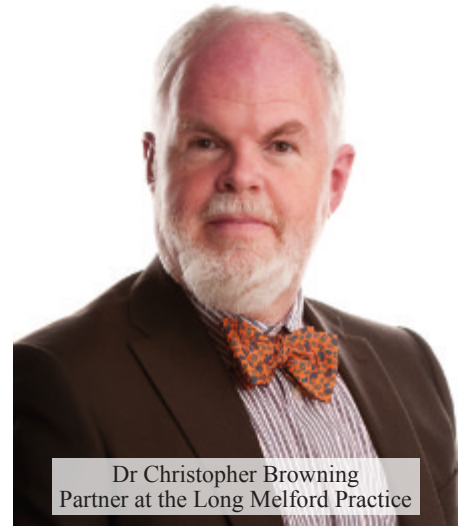
Any patient who has any concerns or questions about their practice is encouraged to contact the local NHS Patient Advice and Liaison Service on 0800 389 6819 or sneecb-ws.pals@nhs.net

On the plus side, the CQC reported that staff ‘treated patients with kindness, respect, and compassion’. However, the CQC has placed the Melford practice in special measures which means it will be inspected again within six months. If insufficient improvements have been made, the CQC can start the process of stopping the surgery from operating. To see the report go to cqc.org.uk

Dr Christopher Browning, a partner at the practice, said:

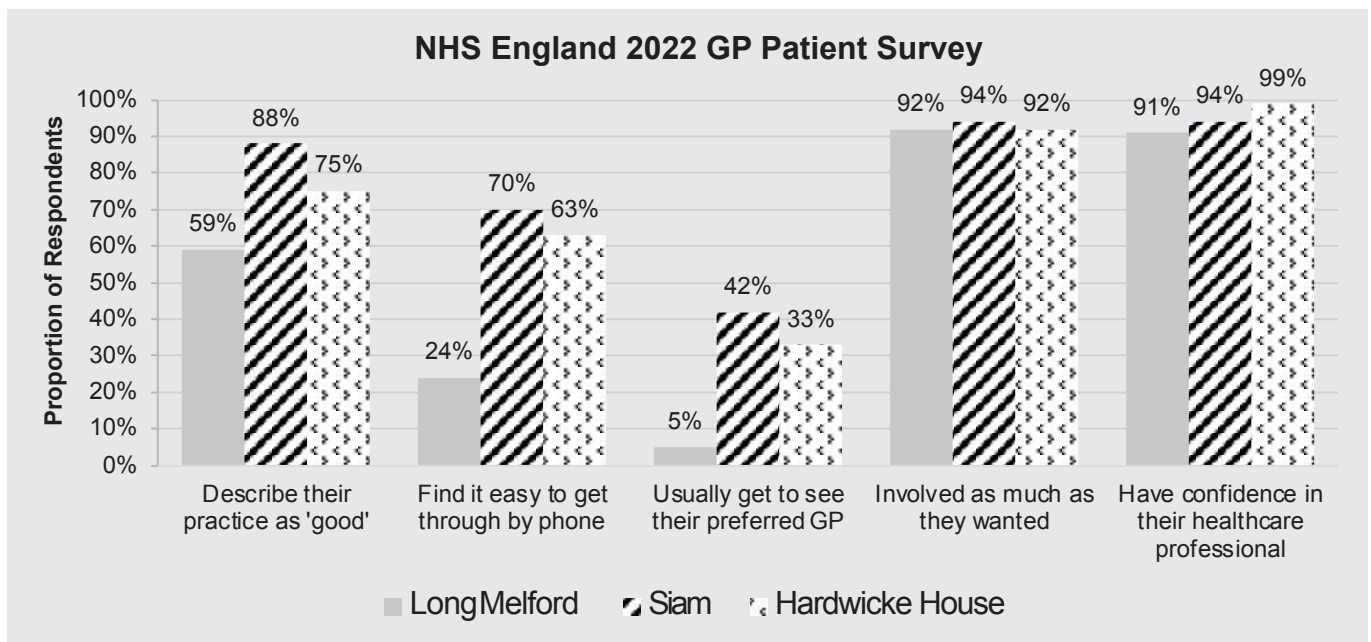
“Clearly, we are very disappointed to have received this CQC rating. We had already recognised that changes needed to be made and we were in the process of making many of these. We are determined to continue to work tirelessly to bring about improvements.”

The CQC report came hot on the heels of the results of the 2022 GP Patient Survey. This was commissioned by NHS England and covers every GP Practice in the country. We’ve compared some of the results for the Melford surgery with two other nearby practices – Siam and Hardwicke House. There were a total of 18 questions and we don’t have room to print all the results but you can see them at gp-patient.co.uk



Dr Christopher Browning
Partner at the Long Melford Practice

You’ll see from the Chart below that Melford patients found it particularly difficult to get through on the phone and to see their preferred GP. But once they got an appointment they had confidence in the person they saw and were as involved in decisions about their care and treatment as they wanted to be.



Health Matters

We asked the surgery for its reaction to the survey results and any measures it was taking to improve things in areas where the practice came out poorly compared with other practices.

The Surgery's response

Dr Browning stated the practice's commitment to providing high quality services and apologised to patients who felt their experiences had not been satisfactory. He said:

"While there were some disappointing results, we are pleased to see that the survey found 92% of respondents were involved as much as they wanted to be in decisions about their care and treatment during their last general practice appointment. This is above the national result of 90%."

"We do acknowledge the problem people have experienced booking appointments at our surgery. We have recently introduced a first contact mental health appointment system and first contact appointments for physiotherapy. These offer more focused appointments to the patients in these clinical areas who otherwise would have waited longer to be seen by a doctor."

Dr Browning cited recruitment problems:

"In line with many other areas of the country, our main challenge has concerned workforce and attracting the right skills to support our services. This problem has been exacerbated at our practice because we are situated within a rural location – neighbouring towns of Bury St Edmunds and Sudbury have not experienced this issue as acutely as we have."

The Patient Participation Group's response

Anne Hinds, Chair of the Patient Participation Group for the Long Melford practice said "The results are very disappointing and we hope to discuss with the practice how things could be improved at our next meeting."



Anne Hinds, Chair of the PPG for the Long Melford Practice



Chiropodist

Established & locally based (Alpheton)

- Quality foot care
- Caring service tailored to your individual needs
- Expert advice
- Experienced with additional nursing qualification

If you are unsure as to whether chiropody is for you, please do not hesitate to contact me.

Elizabeth Gibson MSSCh MBChA
Health & Care Professions Council Registered
• Reg. No. CH20192



CLINIC Casabella

Hall St. Long Melford
CO10 9HY

T: 01787 370300

HOME VISITING PRACTICE

Long Melford, Sudbury, Clare
& surrounding villages.

T: 01284 827380 M: 07798 806184

Remembrance Matters

Melford has a fine tradition of honouring the sacrifice made by members of our armed forces and marking Remembrance Sunday with an impressive parade. This year will be no exception, with three main strands to the Remembrance effort.

The Poppy Appeal in Melford raises an impressive £7,000 to £8,000 each year. The money is used for the welfare of ex-service personnel (and their dependants and carers).

This year's Appeal will run for two weeks leading up to Remembrance Sunday on 13th November. There will be a stall outside the Cock and Bell and poppies will be available in most village retail and hospitality venues. Wreaths are also available by emailing longmelfordpoppyappeal@yahoo.com by the end of October.

The Remembrance Garden will be set up around the base of the beacon on the Top Green during the week leading up to Remembrance Sunday and will remain there for the following week. Anyone can contribute any item they wish (eg notes, floral displays) in recognition of those who have served our country.



Photo: Steve Thomson

The Remembrance Service Parade, on the 13th November, will set off from the entrance to Melford Hall opposite the conduit at 10.30am. The parade will lead into the service of remembrance at Holy Trinity and return after the service to Melford Hall Park, by 12.30pm.

Royal British Legion

If you'd like to support the work of the RBL in Melford, why not join the village branch? Membership is open to everyone who shares the values of the Legion, whether or not you have served in the forces. The Branch is also looking for new committee members. For further information, contact branch secretary Martin Richards by emailing rbl.longmelford@gmail.com.



Polarity, Trauma & Reiki Therapist

Help with:

- Headaches and migraines
- Neck, shoulder and back problems, sciatica
- Sleeping problems
- Stress, restlessness, exhaustion
- Trauma, eg. whiplash
- Recovery after operations and accidents
- Chronic fatigue, fibromyalgia

☎ 07841 017049

✉ info@myriambergertherapy.co.uk

www.myriambergertherapy.co.uk

📘 [myriambergertherapy](https://www.facebook.com/myriambergertherapy)



ARE YOU LOOKING FOR RESPITE FROM GRIM DAILY NEWS ??

Welcome to the Cultural Wellbeing provided by **THE ARTS SOCIETY STOUR VALLEY**

On the 3rd Wednesday of each month at 11am at **The Village Hall (opp The Bull)** with refreshments available beforehand.

Our Autumn Programme has just launched offering illustrated Monthly Talks (1 hr), Visits, Special Interest Days + a quarterly magazine and much more – all at a very reasonable cost.

COME & TRY US FOR FREE

For further details: info@TASstourvalley.org.uk quoting **MM8** or via our website www.TASstourvalley.org.uk

*(TAS Stour Valley was formed from TAS South Suffolk & TAS Sudbury)

WEDNESDAY 16th NOVEMBER at 11am LES TROIS GRANDES DAMES OF IMPRESSIONISM

Marie Bracquemond, Mary Cassatt & Berthe Morisot

Prominent among the Impressionists but now less well known than their male colleagues. The lives & work of these innovative & radical artists are examined.

Remembrance Matters – Wartime Diary of a Melford Resident

It wasn't only the forces who contributed to the WW2 efforts but civilians at home too. Renowned artist Mary Braithwaite was one such. She lived in Brook House, opposite The Bull, throughout the war.

She was a single lady who divided her time 'between Painting, Work and Pleasure'. Work was mainly as a JP. Pleasure was tennis parties, bridge and dinner parties.

Melford Matters has had an exclusive look at Mary's private diary of the war years. Here are some extracts.

Life before the war

'When war broke out in 1939, I was living here with an excellent cook and two young and obliging maids. The old gardener was in his 45th year of service with our family and a splendid young fellow aged 18 looked after my car, the incubator, 150 chickens and did the "backhouse" work and the lawns.'

Officers billeted in Brook House

'After the war had been going for about nine months, all of us with spare rooms were billeted by the Police with officers and batmen. My first share was four officers and their attendant batmen. One officer was a very undesirable Major whose batman had to help him to bed!'

The back of the house

'The buildings at the back of the house were requisitioned by the War Office in 1939 and as many as 20 troops slept and washed there. The garden was marked as "Out of Bounds" but I allowed the officers the use of the lower garden and lawns and they played tennis, croquet or bowls whenever they liked.'

Brook House in the 1930s – it hasn't changed much over the years
Photo: Courtesy of Long Melford Heritage Trust



Mary Braithwaite – a formidable lady
Photo: Courtesy of Long Melford Heritage Trust

'On one hot day I sent for the corporal and said that the troops could enjoy the lawns and a quiet afternoon under the trees. On awakening from my usual Sunday Siesta I saw, to my complete consternation, rows of men sprawled out asleep in varying degrees of deshabelle and nakedness under my drawing room window.'

Scandal at The Bull

'There was a real proper "camp follower", a blonde, staying at The Bull. I believe she was a spy. The Commanding Officer came to hear about her and how she inveigled the young officers into her net. There was a particularly nice young man billeted here at the time who told me all about it and how difficult it was to keep out of the lady's clutches.'

An invasion of Irishmen and Dockers

'In 1943, the village was invaded by Irishmen and dockers and the Billeting Officer had to find board and lodging for 250 men at almost a moment's notice. Navvies and workmen of all types were urgently needed for the construction of the new aerodrome and for rough work at the new American Hospital.'

Women's Voluntary Service

'Very much against my will, I was enrolled as Comptroller of the village WVS. This was a very tiresome job, largely on account of the quantities of Red Tape at HQ. I took a great delight in cutting this tape.'

Diary Matters

October	Event	Venue/details	Time
Saturday 1st	Book Fair	Village Hall	10.00am to 4.00pm
Saturday 1st	Disco – free entry children, £5 adults, no need to pre book	LM Royal British Legion Social Club	7.00 to 10.30pm
Sunday 2nd	Oktoberfest	LM Royal British Legion Social Club	12.00 to 10.00pm
Wednesday 5th	Antiques Fair	Village Hall	9.00am to 3.30pm
Thursday 6th	Parish Council: Planning/Full Meeting	Old School	7.00pm/7.30pm
Friday 7th	Peter Kay Tribute Night	The Melford - LM Football Club	7.00 pm
Friday 7th	Bygones	LM Royal British Legion Social Club	8.00 to 10.30pm
Saturday 8th	The Kingfisher Ensemble led by Beth Spendlove	Concert dedicated to Patrick Kohler. Holy Trinity Church	7.30pm
Thursday 13th	GN/Friends of LM Library Coffee Morning	Old School	10.00 to 11.30am
Thursday 13th	Car club	LM Royal British Legion Social Club	7.00 to 10.00pm
Thursday 13th	LMWI: Wayne Tanswell, Local Signwriter	Old School	7:30pm
Friday 14th	Folk & Acoustic Club upstairs	Cock & Bell poboap123@gmail.com	8.00pm
Friday 14th	Melford Movies – Downton Abbey: A New Era	Village Hall	7.00 for 7.30pm
Wednesday 19th	The Arts Society Stour Valley	Village Hall	11.00am to 12 noon
Thursday 20th	LM Historical & Archaeological Society	Anne Grimshaw - Collision in the Clouds. Old School	7.30pm
Friday 21st	The Big Quiz	The Melford - LM Football Club	6.30pm
Friday 21st	Quiz night: £10 per team (max 6), pre-book	LM Royal British Legion Social Club	7.00 to 10.00pm
Thursday 27th	GN/Friends of LM Library Coffee Morning	Old School	10.00 to 11.30am
Thursday 27th	Long Melford Litter Pickers	longmelfordlitterpickers@gmail.com	2.00pm
Friday 28th	Children's Halloween Party- free entry children, £5 adults, no need to pre book	LM Royal British Legion Social Club	6.00 to 10.00pm
Sat 29th/Sun 30th	Antiques & Vintage Fair	Old School	9.30am to 4.00pm
Sunday 30th	Long Melford Litter Pickers	longmelfordlitterpickers@gmail.com	2.00pm
November	Event	Venue/details	Time
Wednesday 2nd	Antiques Fair	Village Hall	9.00am to 3.30pm
Thursday 3rd	Parish Council: Planning/Full Meeting	Old School	7.00pm/7.30pm
Friday 4th	Bingo	The Melford - LM Football Club	7.00pm
Friday 4th	Bygones	LM Royal British Legion Social Club	8.00 to 10.30pm
Thursday 10th	GN/Friends of LM Library Coffee Morning	Old School	10.00 to 11.30am
Thursday 10th	Car club	LM Royal British Legion Social Club	7.00 to 10.00pm
Thursday 10th	LMWI: Fisherman's Mission	Old School	7.30pm
Friday 11th	Melford Movies – Belfast	Village Hall	7.00 for 7.30pm
Friday 11th	Big Night Out - Firework display	Melford Hall	Gates open 5.30pm
Friday 11th	Folk & Acoustic Club upstairs	Cock & Bell poboap123@gmail.com	8.00pm
Sunday 13th	Remembrance Sunday Service and Parade	Parade starting from Melford Hall & Holy Trinity Church	Parade at 10.30am Service 10.50am
Wednesday 16th	The Arts Society Stour Valley	Village Hall	11.00am to 12 noon
Thursday 17th	LM Historical & Archaeological Society	Sarah Doig - Beyond hatches matches and dispatches. Old School.	7.30pm
Friday 18th	Sue Breen, Medium, £10 per ticket, pre booked tickets	LM Royal British Legion Social Club	7.00 to 10.30pm
Saturday 19th	Marble Events Craft Fair	Old School	10.00 to 4.00pm
Sunday 20th	SESAW Xmas Fair	Old School	10.00 to 4.00pm
Thursday 24th	GN/Friends of LM Library Coffee Morning	Old School	10.00 to 11.30am

Diary Matters

November	Event	Venue/details	Time
Thursday 24th	Long Melford Litter Pickers	longmelfordlitterpickers@gmail.com	2.00pm
Friday 25th	Musical Bingo, £10 per person, pre booked tickets	LM Royal British Legion Social Club	7.00 to 11.00pm
Saturday 26th	Festive Long Melford	Hall Street, Little Green and the Bull Hotel	11 am to 4.00 pm
Saturday 26th	Friends of Long Melford Library Christmas Fair	Library	10 am to 12.30 pm
Saturday 26th	Book Fair	Village Hall	10.00am to 4.00pm
Friday 25th	Restored Stained Glass Window Party & Christmas Card Sale	Holy Trinity - for more information contact simonedge@btinternet.com	TBC
Sat 26th/Sun 27th	Antiques & Vintage Fair	Old School	9.30am to 4.00pm
Sunday 27th	Long Melford Litter Pickers	longmelfordlitterpickers@gmail.com	10.00am

Regular classes & workshops at Long Melford Village Memorial Hall

Mondays	Bounce classes – Jules Cooper	www.bookwhen.com/bouncelongmelford	9.30 to 10.30am
Mondays	Strollercise – Marina St Leger	07917 333712 www.strollercise.co.uk	11.30am to 12.30pm
Mondays	Beau Dance for 6 to 10 year olds	Holly Cook 07512 692289	4.00 to 5.00pm
Tuesdays	Pilates – Michelle Cowcher	michellecowcher@gmail.com	10.00 to 11.00am
Tuesdays	Bounce & Bounce Beats – Jules Cooper	www.bookwhen.com/bouncelongmelford	6.00 to 8.00pm
Wednesdays	Pop Chorus – Yula Andrews	07788 585441	7.30 to 8.30pm
Thursdays	Bounce Barbells & Bounce – Jules Cooper	www.bookwhen.com/bouncelongmelford	6.00 to 8.00pm
Thursdays	Indoor Kurling (1st and 3rd Thurs)	Drop in for a free taster session	2.00 to 4.00pm
Fridays	Baby Ballet	sudbury@babyballet.co.uk 07580 693747	9.30am to 12.00pm
Monthly	Lecture series (4th Tuesday)	Suffolk Family History Society (Sudbury)	2.30 to 4.00pm
Monthly	Lecture series (3rd Wednesday)	Arts Society of Stour Valley	11.00am to 12.00pm

Regular classes & workshops at the Old School

Daily	Yoga Studio – Áine McGovern	www.longmelfordyoga.co.uk 07840 030545	See website
Mondays	Card making – Pauline Andow	01787 228790	12.30 to 2.30pm
Tuesdays	Upbeat (Heart Support Group)	Hilary Neeves 01359 232678	9.00am to 1.00pm
Tuesdays	U3A Art	Vernon Lever 01787 310511	1.30 to 4.00pm
Tuesdays	Sophia Paper Kite Yoga	Sophia 07968 165185	6.00 to 9.00pm
Tuesdays	Yoga with Clare Turner	clareturneryoga@gmail.com	5.45 to 7.15pm
Wednesdays	Life Drawing	John Garbett 01787 378798	10.00am to 12.30pm
Wednesdays	Keep Fit – Heather Mahony	sheather.mahony@btinternet.com	10.00 to 11.30am
Wednesdays	Friendship Dancers	Robin Hart 01787 269613	3.00 to 5.00pm
Wednesdays	Tudor Archers	Terry Chittock 01426 160053	7.00 to 9.30pm
Wednesdays	Silver Band	Mike Murkin 01787 312605	7.30 to 9.30pm
Thursdays	Zen Yoga – Fiona Dinning-Cole	yoga@nowandzen.guru 07967 706041	10.00 to 11.30am
Monthly	Photography Group (1st Monday)	Derek Challis 01787 373738	mornings
Monthly	LM Poppies (WI) (2nd Thursday)	Jane Ebejer melfordinn@outlook.com	7.30 to 9.30pm

Regular classes & workshops at The Melford at Stoneylands (LMFC clubhouse)

Mondays	Rock Choir	Adam Abo Henriksen 07840 024591	7.30 to 9.30pm
Tuesdays	Beau Dance for adults	Holly Cook 07512 692289	7.00 to 8.00pm
Wednesdays	Art Class	Edd Terran 01787 370923	2.00pm
Saturdays	Colts and Fillies Junior Football	Ian Ambrose 07970 384576	Call for details
Sundays	Colts and Fillies Junior Football	Ian Ambrose 07970 384576	Call for details
Sundays	LM Veterans Football	Dan Bull 07925 867247	Call for details

Diary Matters

Regular classes & workshops at Long Melford Royal British Legion Social Club

Mondays	Over 60s	Entertainment.longmelford@gmail.com	2.00 to 5.00pm
Mondays	Slimming World	Sam 07377738813	5.30 to 8.30pm
Tuesdays	Tot Rock & Baby Bounce (0 to 5 yrs)	melford.library@suffolklibraries.co.uk	2.30pm
Tuesdays	Bingo	Entertainment.longmelford@gmail.com	7.00 to 10.00pm
Wednesdays	Top Time (for the over 50s but all welcome)	melford.library@suffolklibraries.co.uk	3.00pm
Wednesdays	Tap	Holly Cook 07512 692289	6.00 to 7.00pm
Wednesdays	Crib	Entertainment.longmelford@gmail.com	7.30 to 10.00pm
Thursdays	Yoga	Entertainment.longmelford@gmail.com	9.30 to 11.30am
Thursdays	Tweens Dance Class	Holly Cook 07512 692289	4.00 to 5.00pm
Thursdays	Strollercise	07917 333712 www.strollercise.co.uk	6.00 to 7.00pm
Saturdays	Saturday Craft for children	melford.library@suffolklibraries.co.uk	10.00am to 12.00pm
Saturdays	Live music	Entertainment.longmelford@gmail.com	7.00 to 11.30pm

Regular events and services at Holy Trinity Church

Sundays	Main Service	Holy Trinity Church	10.30am
---------	--------------	---------------------	---------

If you would like your activity or event listed here, let us know the details by emailing MelfordMattersAdvertising@gmail.com. Details for December/January need to reach us by **1st November**.

Melford Movies

Despite the season starting on a very warm August evening, Melford Movies was delighted to welcome a fabulous audience of over 60 for Fisherman's Friends. Our refreshments were popular – particularly the ice creams – and our raffle raised £96 for St Nicholas Hospice Care. September's screening of Operation Mincemeat was also well attended and raised £84 for Holy Trinity Church Stained Glass Fund. Thanks to everyone who joined us.

Coming up on **14th October** we will be greeting old friends as **Downton Abbey** (Yorkshire's version of Melford Hall!) returns to our screens. The much-anticipated sequel features the excitement and glamour of filming for a silent movie at the Abbey, alongside the intrigue of secrets from the Dowager Countess's past in the South of France.



11th November will see a trip over the water and back in time, to 1960s Northern Ireland for **Belfast**, Kenneth Branagh's semi-autobiographical story of one boy's childhood during the tumult of The Troubles. With scores of award nominations, an Oscar win for its screenplay and the BAFTA for British Film of the Year, as well as a cast including Judi Dench, Jamie Dornan and Ciarán Hinds, the film is a 'must see'.



Doors open at 7pm, with the film starting at 7.30pm. Adults £5; Under 16s £3.

We look forward to welcoming you. For further information, to reserve seats or to join the team, contact us at melfordmovies@icloud.com.



Youth Matters

An Action-Packed Summer Camp For The Scouts

The Melford Scouts, aged 10½ to 14 years, had their 3½ day summer camp at Thorrington campsite. The camp was planned and run by scout leader Graham Souch. The original camp theme was survival.

Unfortunately however, the hot and dry weather meant that there were restrictions in place so the fire lighting skills and cooking their own food on a camp fire were activities the scouts couldn't do. But the theme was still very much one of survival.

All scouts spent three nights sleeping in the woods. They had no tents but could sleep under tarpaulins or in bivouacs – shelters they made from natural materials found in the site's wooded area. Other activities included rafting, a 3D maze, an adventure run through an assault course and pedal go-karting. They also did a round-trip hike of seven miles to and from Brightlingsea for a fish and chip supper. The camp was another brilliant opportunity, offered by our fantastic village scouting groups.



The scouts go rafting



Brings a whole new meaning to 'making your bed'...



... But it works



The Melford Antiques Interiors & Lifestyle Centre

Voted Best Antiques Shop/Centre in London and the South East of England*

East Anglia's largest Antiques & Retail Emporium
60+ dealers ~ 16,000 sq.ft ~ 4 floors
Mon - Sat 10.00am to 5.00pm, Sun 11.00am to 4.00pm
The Old Maltings, Hall Street, Long Melford, CO10 9JA
Tel: 01787 323626 www.melfordantiquesandinteriors.co.uk



The Pullman CAFE & VINTAGE TEAROOM

Tea, coffee, fine home-made scones, cakes and other delights (closed Tues)



Top Floor AUCTIONS

Regular on-line auctions with personal viewing beforehand

* Prestige Awards/Corporate Livewire 2022

The Silver Band gave several crowd-pleasing performances throughout the afternoon.



The great weather and wide variety of stalls and sideshows drew a crowd of over 2,500



Village Fete and Melford

from 1pm til 4pm

The return of the village fete was a success for everyone who attended and participated. Congratulations to Amy, Rosey, and Graham for making it happen. Negotiations are underway to host the fete again in 2023. Photos by...



There was a fantastic turnout for the Fun Dog Show. Thanks to Swayne's Vets for the treats and...



Rev. Matthew Lawson's rendering of 'How Much Is That Doggy in the Window' (left) earned him a session in the village stocks (above).



Sudbury U3A Painting and Drawing Group showed a collection of their members' works



Hands-on demonstrations by local artist Vernon Lever were a big draw



The Melford Poppies (WI) sold over £120 of cakes

The Community Association was delighted to run the first Produce Show since 2016 as part of the cracking village fete on 9th July. The wonky vegetable category attracted many admiring glances. The star of the show, however, was the Mystery Category. It was a tricky decision for the judges to choose the overall best in show, but they were unanimous in selecting Jill Lagdon's entry, with her stunning cross-stitch tapestry. Congratulations to her and all those who entered and thanks to those who gave up their time to judge. The plan is to restore the show to its former September slot at the Old School for 2023.



Produce Show

at Melford Hall SAT 9th JULY

A great success – thanks to everyone who participated, and particular thanks to Graham and the other organisers for making the event under way for Melford Hall to us: Teresa Poole and Phil Buck



Dog Show. Prizes.



Fortunately, visitors weren't put off by the dinosaur!



The event helped various local charities and good causes raise over £2,500.



Seadogs Training gave a gun-dog demonstration



An impressive array of photography, baking, preserving, painting, growing and flower arranging talent was on display!

Many different skills were in evidence in the Mystery Category, with Jill Lagdon's stunning cross-stitch tapestry (left) taking First Prize as well as the Overall Best in Show shield (below)

Scutchers

LONG MELFORD

Celebrating 30 years
(And still going strong)

Thanks to everyone for their amazing support!

www.scutchers.com

Opening times
Thursday, Friday and Saturday
12noon to 2pm (last orders)
6.30pm to 9pm (last orders)

Westgate St
Long Melford
Tel: 01787 310200

*Handmade Rugs
Runners &
Large Carpets*

*Experts in Restoration
& Cleaning*

www.rugandcarpetstudio.co.uk

THE
RUG
&
CARPET
STUDIO

The Old White Hart,
Long Melford, Sudbury
Suffolk CO10 9HX

Open Monday to Saturday
10:00am – 5:30pm

01787 882214

Order Online
Free Delivery



**THE SWAN
LONG MELFORD**

DELICIOUS FOOD | BEAUTIFUL GARDEN | LUXURY ROOMS

HALL STREET, LONG MELFORD, SUDBURY, CO10 9JQ

01787 468653

Heritage Matters – Fire Tales from Past to Present

Willing but not Professional

In his book, 'Melford Memories', Ernest Ambrose recalled the unofficial fire fighters of the 1890s. If there was a fire, some men from the Coconut Matting factory went to the back of the Bull to haul the fire appliance out of what is now the Parish Council office. Others went to the stables, 500 yards away, to collect a horse to pull the appliance. One went to whichever pub was nearest to the fire to get beer for his colleagues. Ernest recalled that the hose pipes were never checked and had vivid memories of as much water squirting out of the holes as came out of the nozzles.



Our early fire appliance housed behind the Bull
Photo: Courtesy of Long Melford Heritage Trust

A New Engine and a New Station

During the 1930s, Melford got its first full-sized motorised engine and a new station, Foundry House, next to the Cock and Bell. It wasn't long before the brigade had to deal with some devastating fires.

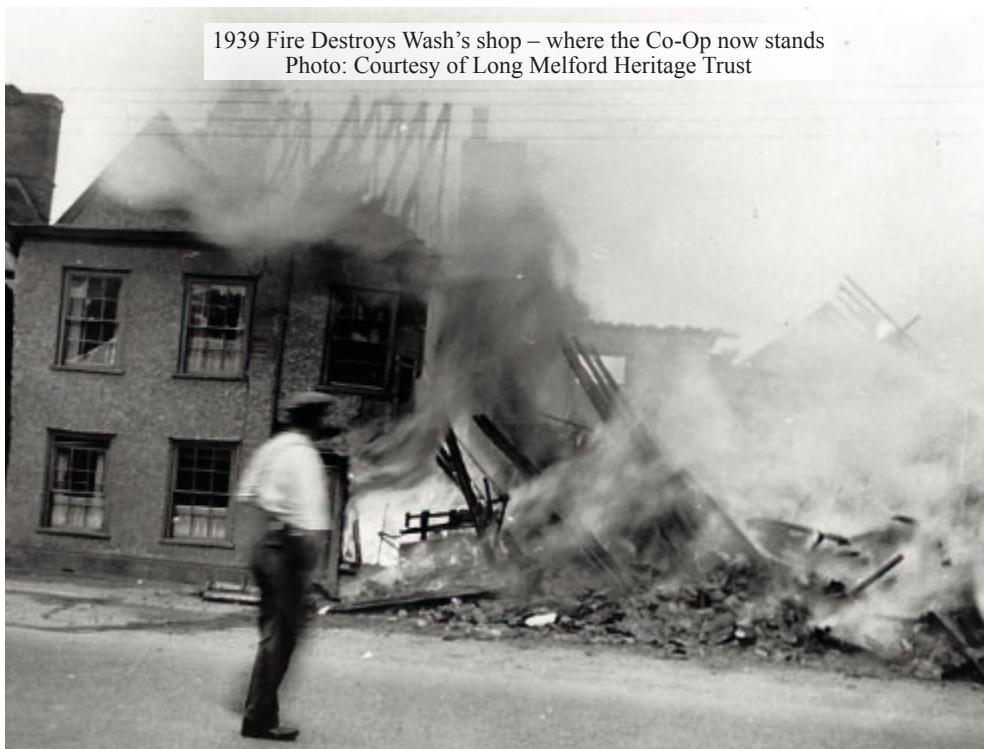
In the summer of 1939, villagers gathered to watch the fire fighters battle a spectacular fire at what was Wash's shop on Hall Street. Others did more than watch, they helped to save the furniture from nearby buildings. The fire destroyed Wash's which stood on the site of what is now the Co-Op.

In 1940, a guest at the Bull was woken up by smoke and crackling flames. He was trapped in his room next to the upstairs lounge, which was his way out of the Bull but engulfed in flames. Needs must and so he resorted to a less orthodox route for his great escape. He knotted the bedsheets together, tied them to a pipe and climbed out of the window. Using the sheets as a rope, he made his way down the considerable drop to ground level.

Willing and Able

The service provided by today's Melford firefighters is a million miles from that provided by the willing amateurs of yesteryear. Melford's on-call crew of 12 have received thorough training and, on top of that, weekly training sessions.

The crew deserves a big thank you. The hot summer has meant a busy time for our firefighters. In July and August alone, they turned out 110 times (almost 100 were field, grass or crop fires). The total call outs for all of 2021 was 140.



1939 Fire Destroys Wash's shop – where the Co-Op now stands
Photo: Courtesy of Long Melford Heritage Trust

Melford has been nominated for the award of Best Station of the Year in Suffolk. We wish them all the very best.

Business Matters

Felix of Long Melford's 70th Anniversary

It wasn't just the Queen celebrating her Platinum Jubilee this year, but Felix of Long Melford too.

In the 1940s, Felix Golynia was in the German army. He ended up as a POW in Long Melford and worked on a farm. Patricia Holder lived in Melford with her family, and during those war years, she and Felix met. At the end of the war, Felix decided to remain in England and carried on working for the farm manager where his duties included driving.

After courting, Felix and Patricia married in 1950 and lived in Cordell Place. In 1952, Felix Taxis of Long Melford started up with just one car. Whilst building up the business, Felix also worked at CAV – a Sudbury factory. Felix Taxis expanded with wedding cars and more taxis. Over the years, their four children (Lucy, Stephen, Mark and Christopher) joined the business. They worked on weddings, long-distance journeys and the taxi service. In 1973, the first minibus was purchased and the business kept expanding with more staff as well as vehicles. In 1976, the business moved to its current home at Windmill Hill, where all the vehicles could be accommodated.

Sadly, Felix passed away suddenly in 1981. Because he was so well known, his funeral service at Holy Trinity was packed, with some having to pay their respects outside the church. The family continued to run the business and over the years they bought out Bears Motors, A-Line Taxis and then Banhams Coaches. Their first vintage coach was a 1947 Bedford OB.

The business grew to include taxis, minibus hire, coach hire, service routes, weddings, funerals and airport transfers. Felix of Long Melford became a member of the Guild of Master Craftsmen and was awarded a certificate of merit for good practice for beginning to incorporate accessible transport.



Felix and Patricia on their wedding day in 1950



The vintage Bedford coach built in 1947

Follow that coach

There have been many famous customers over the years, including a well-known travel programme presenter, a TV chef, and a special envoy. There was even a high-profile boxer who spotted the vintage coach in Brighton and followed it until it stopped. He was very keen to buy the coach but his offer was declined! And for the filming of the TV programme Lovejoy, the business provided a hearse, limousine and drivers.

A stitch in time saves the day

Over the years there have been many notable events but two moments stick out. One day Lucy was chauffeuring a wedding car and when she arrived at the house to collect the bride, the bride revealed that the zip on her dress had split. Lucy sewed the split and concealed the zip whilst the dress was still on the very grateful bride, who got to the church on time!

Business Matters

Chris and Felix helped stop the Great Escape

Chris and Felix had to pick up a prisoner who was handcuffed to a policeman – they needed to get the prisoner to hospital in Ipswich urgently. It was a rather interesting journey as the prisoner tried to escape whilst Chris was driving as fast as possible along the A12. The prisoner attempted to get out of the speeding car whilst both Felix and the policeman were holding onto him and pulling him back into the vehicle. They finally received a police escort to guide them into the hospital and Chris and Felix decided they needed to go home and have a break!

A tribute to “Mrs Felix”

Pat, known to many as “Mrs Felix”, worked for the business answering the phones to customers and seeing the drivers in and out at the yard day in, day out. She was still working right until the day before she suddenly passed away in 2010.

Looking to the future

Lucy, Stephen and Christopher are still running the business with taxis, minibuses, coaches and vintage coaches. They have help from the next generation in the form of Teresa, Suzanne and Heather. Steering the way through the pandemic was tough; from having every vehicle on the road to nothing was a sorry sight to see. But things have slowly been getting back to normal. All those at Felix of Long Melford hope more people use the local service buses to keep them viable and, if business returns to its former level, the future looks bright.



A wedding car bought in the 1960s



Edward Charles Interiors is a family upholstery business and has had a showroom in Ringers Yard, Long Melford for 7 years. The business has been established since 1971 with a workshop in Essex.

www.edwardcharlesinteriors.co.uk
01787 377705
edwardcharlesinteriors@btconnect.com

**EDWARD
CHARLES
INTERIORS**

*Bespoke
Handmade
Furniture*

We make bespoke handmade upholstered furniture such as made to measure sofas and chairs, as well as headboards, ottomans etc.

We also offer a full reupholstery service including furniture in the home, as well as pubs, hotels and also vintage cars, boats, horseboxes and caravans.



Parish Council Matters

Neighbourhood Plan Referendum: 27th October

The Referendum to vote on the Long Melford Neighbourhood Plan will be on Thursday 27th October. Everyone on the Melford electoral roll will be able to vote and will receive a Poll Card or Postal Vote. In the Referendum you're being asked: "Do you want Babergh District Council to use the neighbourhood plan for Long Melford to help it decide planning applications in the neighbourhood area?"

The Plan has taken six years to finalise and, if adopted, will mean that BDC and our Parish Council will need to take the policies in the Plan into account when considering planning applications in Melford.

This is an important opportunity for the village so **please exercise your vote.**

To view the Plan visit www.longmelfordnp.co.uk. Printed copies are available to read at the Parish Council office, the Library, Breakout, Dilly Dally and Holy Trinity Church.



New Councillor and Clerk

At its August meeting, the Council co-opted Helen Brabner to serve as a Councillor until the next elections in May 2023. Helen says "I was born and raised in the village and have lived here for most of my 60+ years with no desire ever to live anywhere else. I hope to make my contribution, however small, to making and keeping the village great and a place where people want to live and visit."

Don Lovelock, our Parish Clerk, retired on 31st August – thanks very much to him for his service. Our new Clerk is Clare Lee. She started work part-time in September while serving her notice in her previous job and will be full time from October. Welcome aboard to both Helen and Clare.

NEED A PLUMBER?



A P PLUMBING
Professional service with
over 40 years' experience
All plumbing work
undertaken
Suffolk and all surrounding
areas

Free estimates - call today
01787 282826 07940 516199
poultonplumbing123@gmail.com

3, The Old Orchard, Glemsford,
Sudbury, CO10 7SX

suregreen
local to you... delivered in a click
YOUR LOCAL GARDEN & LANDSCAPING SUPPLIER
www.sure-green.com
01376 503869

FREE Delivery | High Quality, Low Prices | Thousands of Products | Rated 4.6 ★ by Customers | Same-Day Click & Collect

Timber Decking
• 3.6m & 4.8m Lengths
FROM **£4.32** METRE

Chicken Wire
• PVC-Coated & Galvanised
FROM **£6.49** ROLL

Planters
• Variety of Designs, Shapes & Sizes
• UV-Stabilised & Frostproof
FROM **£18.49** EACH

Fence Panels
• Available in Heights 3ft to 6ft
FROM **£34.95** EACH

Stones, Chippings, Gravel, Subbase
• Available in 20kg & 850kg Bags
FROM **£56.00** BULK BAG

MORE PRODUCTS ONLINE



16 MILES FROM LONG MELFORD
Mon - Fri: 08.00 - 18.00 | Sat: 08.00 - 17.00 | Sun: CLOSED



Architectural Design & Planning

Local Architectural practice providing a full range of Architectural services including...

- Residential Extensions & Refurbishments
- New Dwellings
- Commercial / Industrial Projects

Free Consultation / Quotation

T: 07974 251150

E: dking482@yahoo.co.uk

W: www.kingarchitectural.co.uk
(Currently under construction)

5 Spicers Lane,
Long Melford,
Sudbury, Suffolk,
CO10 9JJ

Brain Matters



A Quiz for Halloween on Matters Spooky

1. Which nearby village has a church which is said to be haunted?
2. Which author created the 'Ghost of Christmas Past'?
3. By what name is the day after Halloween, November 1st, known?
4. What is the name of the type of ghost which creates a disturbance such as throwing objects?
5. What are the names of the couple who own Button House in the TV sit-com 'Ghosts'?
6. What is the title of the short verse which begins 'From Ghoulies and Ghosts and long-legged Beasties'?
7. Where are the ghosts of the murdered 12-year-old King Edward V and his younger brother said to haunt?
8. What is the name of the legendary ghost ship which was doomed to never dock and to sail the oceans forever?
9. Which one of Shakespeare's plays features Banquo's ghost?
10. Which brewery produces Ghost Ship beer? Is it Adnams, Greene King or Nethergate?

Answers on page 30.



Nature Matters

Welcoming nature into Long Melford

I write this after the driest summer for decades. A lack of water and rock-hard ground have made life difficult for species such as badgers and moles that dig for earthworms and for birds seeking to drink and bathe. Trees and plants have suffered, including our newly planted hedges that will be replanted this autumn. But insects and the birds that feed on them, including swifts, have fared better.

This extreme weather illustrates the importance gardens play in supporting wildlife. The provision of water in a garden, whether a pond or just a shallow dish, has been a lifeline for many species. And we must continue to provide water throughout the winter. Birds need to bathe all year round to keep their feathers in good order.

Providing food and shelter

We should also provide food and shelter. This can be growing native flowers or keeping a patch of longer grass to encourage insects, to putting out food for hedgehogs and birds. Autumn is a critical time for hedgehogs to get enough food to ensure they can survive winter hibernation. Providing a variety of bird food over the winter can mean the difference between death and survival for many of our small birds.

All creatures need shelter too. Don't be tempted to cut down all the seed heads – they provide shelter for overwintering ladybirds. Leave a pile of logs to shelter wood mice and hedgehogs and remember that bird boxes are not just for nesting but also provide roosting sites for small birds in the winter weather. With our changing climate our wildlife needs as much help as it can get, and each of us can do our bit at home all year round.

The Biodiversity Group continues to do what it can to encourage nature in the wider environment and will again be holding regular working parties to improve the environment at the Country Park and on the Railway Walk. If you'd like to volunteer to help, please contact me or Lisa Tipper (tipperl@longmelford-pc.gov.uk)

Jane Burch
jane_burch@yahoo.co.uk



Farm Shop, Cafe & Salon open 6 days a week
Cafe booking recommended
Salon by appointment
Closed Mondays



www.willowtreefarmshop.co.uk 01787 280341

Willow Tree Farm Shop & Cafe | Lower Road | Glemsford | CO10 7QU



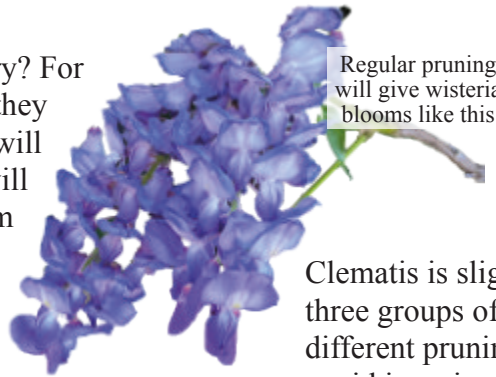
Gardening Matters – Notes from the potting shed

When and how to prune your shrubs

The topic we receive the most questions about is pruning so we are devoting all our space in this issue to that (sometimes) thorny topic. The first requirement is sharp and clean tools such as secateurs and a pruning saw. This will reduce the chance of introducing infection to your plants by leaving an uneven cut. The other thing to remember is not to get stressed about pruning, usually any unwise chopping does no long-term damage!

Why is pruning even necessary? For ornamental plants, the risk if they are left unpruned is that they will become too large and many will only develop new growth from their extremities, creating a mass of bare woody stems and blooms only on the high boughs.

Consider when your shrubs flower: if you have shrubs which drop their leaves in winter (deciduous plants) and flower between July and October, spring pruning is preferable, reducing the plant to a couple of buds from the main stem. This group includes buddleia, fuchsia and hydrangea. Deciduous shrubs flowering between November and June should be pruned immediately after flowering. Cut flowering stems as low as possible and aim to thin out the plant by about one third. This group includes flowering currants, philadelphus and weigela.



Wisteria, Lavender and Clematis

The specific plants we have been asked about recently are wisteria, lavender and clematis. Taking these in turn, here's a neat way to remember the optimum pruning of wisteria: just think 2/2 and 7/7. That means growth should be cut to two buds from the main stem in February and to seven buds in July. That should increase your chances of a glorious display in May and a reasonably manageable plant during the summer.

Lavender should be cut immediately after flowering, usually in August, but be sure to leave some of the leafy growth intact and never cut into the woody stems.

Clematis is slightly more complicated as there are three groups of clematis and each requires different pruning treatment. The main thing to avoid is spring pruning of stems that were destined to produce flowers that year. To guard against this, just remember: 'if it flowers before June, don't prune!' – wait until after flowering to tidy up.

In the next issue we will be looking at fruit bush and fruit tree pruning. Meanwhile, don't forget the fabulous potted bulbs available at the Christmas Fair at the library on Saturday 26th November, from 10am to 12.30pm.

Please keep sending your queries and tips in to Melfordmatterslifestyle@gmail.com

Happy Gardening!

Long Melford Village Memorial Hall

Situated in our beautiful village, the hall is the perfect venue for your event, however large or small. It offers a large function room with a stage area and a fully equipped kitchen. Tables and chairs are available free of charge if you need them and there is a large car park for the use of your guests. Whether your event is a family party, a wedding reception, a fundraising evening, an exercise class, a regular community event or a simple meeting we are sure the Memorial Hall will suit your needs.

	Monday - Thursday	Friday - Sunday
Commercial rate	£16 per hour	£19 per hour
Standard rate	£13 per hour	£16 per hour
Melford resident rate	£10 per hour	£13 per hour

Audio visual equipment available @ £25 per session

To book Long Melford Village Memorial Hall for you event visit our website

<https://www.longmelfordvillagehall.co.uk/how-to-book/>
or call 07379 894325

Sudbury & District
Citizens Advice
is here for you.

"I didn't know how I was going to cope but Citizens Advice helped me to claim extra money and now I can see a way forward"

We offer free advice on a wide range of topics from benefits and debt to housing and consumer problems.

The cost-of-living crisis is causing problems for many people. Are you struggling to pay bills? Do you need help with something else, perhaps a relationship or an employment issue? Then, please, do get in touch.

No-one should suffer alone. If you need support with any of the above or any other area of concern speaking to an adviser may be just what you need.

Call us on 01787 321400 or email
advice@sudburycab.org.uk



Spitfire Mowers

Sales – Service – Repairs

ASPEN – long-life fuel for small engines

From trimmers to chainsaws, hedge-cutters to mowers, industrial to domestic, we have it covered.

We have access to 1000s of parts.

www.spitfiremowers.co.uk

Find us at Unit 4B Clockhouse Farm,
Cavendish Lane,
Glemsford, CO10 7PZ
Phone us on 01787 736618



WATSONS PLANTS

Watsons Plants is bursting with a beautiful array of perennial plants. The quality of our plants is second to none and we are confident they will be thriving in your garden for years to come. We have a substantial choice of quality shrubs and garden plants at hugely competitive prices. For the discerning gardener or enthusiastic beginner, we have something for everyone.

Louise Watson 07952 638016
Chris Watson 07941 640560

Watsons Plants Ltd, Bury Road
Depden, Bury St Edmunds
Suffolk, IP29 4BU
enquiries@watsonsplants.co.uk
watsonsplants.co.uk



The Long Melford Tea Room



A wide selection of loose leaf teas
Homemade Cakes and Scones
Light Lunches
Traditional Afternoon Tea (*pre-book only*)

*The small Tearoom with a big Welcome.
We look forward to seeing you.*

Open 10-5pm
Closed Tuesdays and Sundays
1 Dudley House, Hall Street
01787 881361

Pause For Thought

Retired, retyred, or refired?

I went to a talk the other day by someone reflecting on their experiences of retiring. There were two things in particular that struck me. Firstly, the assumption (in our society at least) that the instant you retire you are consigned to mindlessly sipping wine on the patio or going on cruises – if you can afford to. Secondly, it was felt that there is little respect for older people these days. So when you retire you basically become isolated, drunk ... and maybe seasick!

Thankfully there is a way of retiring which I have seen wonderfully demonstrated by many of our parishioners. Yes there is an adjustment to make as new roles and relationships are found, and as some of the reins of responsibility are handed over. This could be called 'retyring'. But having made adjustments, retirees can actively and positively contribute to family and community over many years ... as God provides the vision and means to do so. This is 'refiring'.

So, let us challenge our assumptions about the more 'mature' members of our community, and let us thank God for the enormous contribution many of them are able to make.

Rev Lawson



Tony Read Carpentry

MDF Furniture maker,
2nd fix carpentry,
Wood-turner & kitchen fitter

Tel: 07970 559227



DO YOU NEED HELP AT HOME?

I am local and have excellent references as a housekeeper and carer/companion.

I am able to cook 



clean and shop



and have always worked in private houses.

**Contact Emma on
07557 367445**

Richard Kemp

County and Parish Councillor
01787 378149
richard.kemp@suffolk.gov.uk

Adam Kemp

Independent Financial Adviser
BA Hons, Dip PFS, Cert CII (MP & ER)
Pension, investment, mortgage, protection and
equity release advice.
Please contact for free initial consultation:
01284 724013 (option 7) or 07988 961240
adam.kemp@amas.co.uk



Coach House Leather Workshop Long Melford

As an experienced, qualified Saddler
I specialise in various leather repairs.

All horse tack/saddle repairs, dog
leads, collars and training aids.
Belts, bags, iPad and phone covers,
etc. Also the above items can be
made up new.

(I do not repair shoes and boots.)

Call or text: Susie Negus
Tel: 07543321492

Looking good is one thing but HEALTH matters too!

HATE GYMS...? Love GYMOPHOBICS!

Ladies ... Isn't it time you got the figure you always wanted?

Gymophobics is a 30 minute ladies only facility that specializes in inch loss, weight loss and toning with members seeing fantastic improvements in their fitness and mobility. Whatever your goal we are here to help! We pride ourselves on the amazing results our ladies get, most of our members lose a dress size in just a few weeks!

- ♥ BOOST YOUR IMMUNE SYSTEM
- ♥ ALL AGES AND FITNESS LEVELS
- ♥ EASY, FUN, FRIENDLY
- ♥ VIP ATTENTION AT ALL TIMES
- ♥ EASE MENOPAUSE SYMPTOMS
- ♥ "AIR RESISTANCE" CIRCUIT TAKES THE WORK OUT OF THE WORKOUT
- ♥ SLOW DOWN THE AGEING PROCESS
- ♥ DIET, INCH AND WEIGHT LOSS ADVICE AND GUIDANCE
- ♥ NO MEN, NO MIRRORS, NO JUDGEMENT

FIRST 2 MONTHS HALF PRICE NO ENROLMENT FEE

SUDBURY Gymophobics
30 MINUTE WORKOUT
NO MEN, NO MIRRORS, NO JUDGEMENT

01787 827030 CALL US!
Market Hill Sudbury
sudbury@gymophobics.co.uk
www.gymophobics.co.uk

Tracy lost an incredible 8 STONE

BEFORE

Facebook, Instagram, *T&Cs apply

gas safe REGISTER


Over 20 years experience
Boiler Servicing and Installations
Landlord Gas Safety Checks
Full heating system power flushing

BB Plumbing and Heating

Ben Boxall

Mobile: 07894 856366

Based in Long Melford



Steve White Electrical Services

Part P Domestic Installer

Fully qualified, insured and guaranteed

- Extra sockets/lights
- Fuse board changes
- Electric Showers
- Fault finding/repairs
- Outside power to garden/garage
- Immersion Heaters

FREE ESTIMATES

01787 281254 or 07920 841041

LIFECHECK

THERAPY COACHING TRAINING SELF

Katrina Love

Trauma Therapist and Positive Mindset Coach

is now practising from Long Melford

07747 345384

WWW.LIFECHECK.LOVE

50 DISHES • AWARD WINNING • CHILDREN EAT FREE*

100% FRESH LOCAL BRITISH MEAT • GLUTEN FREE NAANS

100% NUT FREE • DAIRY FREE • VEGAN • 50 DISHES

The Melford Valley

Sunday Buffet 12pm - 4pm

£9.95

The Melford Valley, Hall Street, Long Melford, Suffolk CO10 9JT
01787 311518 / 310079
www.melfordvalley.com

*Terms and conditions apply please ask a member of staff

50 DISHES • AWARD WINNING • CHILDREN EAT FREE*

Sport Matters

Rain Stopped Play

After an indifferent start to the season, both Saturday teams found themselves in the bottom half of their respective leagues. Happily, the second half of the season saw much improvement.

Josh Burgess, our 1st XI skipper, scored 100+ four times and Lawrence Hall took 7 wickets against close rivals Ipswich. The 2nd XI outstanding player was Brett Wright with one century and eleven 50s.

Both teams began their final games with their fate in their own hands. But both matches ended prematurely thanks to heavy downpours. Fortunately, all of our rivals' games were also abandoned. So the points were shared equally by all teams. This meant both our sides avoided relegation. Sadly, the Sunday 2nd XI was relegated but the Sunday 1st XI finished in the top half of the table.



Football with Food at Stoneylands

It's been a positive start to the new season. Two wins, two defeats and a draw saw us starting September in 9th place. All that with a new look group that includes over 10 new signings and many graduates from the club reserves and U18's. Some tough games and a long season lie ahead but nonetheless the boys have come out fighting and the future is looking positive.



Captain Jacob Brown in action in a pre-season friendly against Dedham

LMFC's popular Saturday morning Soccer School for Under-8s will run throughout the season from 9.30am to 10.30am. If you'd like to bring your child along, please email rob.bowden@the-sun.co.uk.

The club has a new caterer, Sudbury-based Spectre Leisure. Club chairman Geoff Thomas said: "We're delighted to team up with Spectre who have a proven track record of catering at sports events."

They'll also be providing catering for non-football events, including a Grand Quiz Night on 21st October and The Big Bingo Night on 4th November."

New Age Kurling (no, it's not a spelling mistake)

We started New Age Kurling in 2017. With financial help from Richard Kemp and practical help from Nick Pringle of Fit Villages (Suffolk Sport), we bought two sets of Kurling equipment – stones, target mats and pushers (so, there's no bending down to launch the stones).

We meet in the Village Hall on the first and third Thursdays of each month from 2pm till 4pm. We have 25 people on our books and, on average, 16 attend each session. There's no membership fee; just turn up on the day for a charge of £3 which includes tea and biscuits in the break. Your first session is free. It's quite competitive but fun. You don't need a particular skill, just a bit of practice – anyone can play, including wheelchair users.

For further information contact Dave Brinkley on 07956 263903 or davebrinkley123@gmail.com



Not quite the Winter Olympics but great fun

Directory of Clubs and Societies

Group	Contact	Phone/email
Beading (Suffex Bead Club)	Victoria Power	07866 996124
Beavers	Carolyn Spraggon	01787 370686
Business Association	Jane Ebejer	01787 375862
Coffee & Cake @ St Catherine's	Margaret Taylor	01787 880875
Connect Toddler Group	Pam Tonks	07890 880976
Cricket Club	Ivan Newman	07944 893167
Explorers	Thomas Tracey	bovineesu123@gmail.com
Folk & Acoustic Club	Pauline O'Brien	poboap123@gmail.com
Football Club	Richard Kemp	01787 378149
Friends of LM Church Building Fund	Richard Michette	01787 377164
Friends of Long Melford Library		help@suffolklibraries.co.uk
Good Neighbours' Scheme	Helen Eaton	07504 249179
Historical and Archaeological Society	Julie Thomson	01787 375329
Holy Trinity & St Catherine's Church	Rev. Matthew Lawson	01787 310845
Keep Fit	Heather Mahony	01449 736662
Long Melford Community Sports Trust	Peter Turner	01787 468536
Long Melford Cubs	Stacey Cole	07368 519981
Long Melford Group Scout Leader	Stephen Spraggon	melfordgsl@aol.com
Long Melford Museum and Heritage Centre	John Nunn	01787 313496
Long Melford Litter Pickers	Julie Thomson	01787 375329
Long Melford Open Spaces	Graham Eade	01787 319120
Long Melford Parish Recorder	Julie Thomson	01787 375329
Long Melford Photographic Group	Derek Challis	01787 373738
Long Melford CE Primary School	Mrs Woolmer	01787 379929
Long Melford Scouts	Graham Souch	1stlmscouts@gmail.com
Long Melford Women's Institute	Jane Ebejer	01787 375862
Melford Music	John Watts	01787 310373
Neighbourhood Watch	Stuart Finch	07867 371564
Over Sixties Club	Mrs Albon & Mrs Woodgate	371413/376711
Old School bookings	Rosey Eade	01787 319120
Project Seven	Andrew Hagger	07980 526067
Royal British Legion	Martin Richards	01787 377567
Scout & Guide HQ bookings	Vicki Ramdhanie	lmsglettings@gmail.com
Silver Band	Mike Murkin	01787 312605
The Arts Society Stour Valley	John Ashton	07899 872222
Trinity Singers	Sue Roberts	01787 319850
Upbeat Heart Support	Hilary Neeves	01359 232678
Village Hall bookings	lettings.longmelfordvillagehall@hotmail.com	07379 894325

Please notify us of any additions or changes by emailing MelfordMattersAdvertising@gmail.com. Amendments must be received by **1st November** to be included in Issue 11 – December/January.

Quiz Answers

- | | | |
|--------------------------------------|-------------------------------------|------------------------|
| 1. Borley | 4. Poltergeist | 7. The Tower of London |
| 2. Charles Dickens | 5. Alison and Mike Cooper | 8. Flying Dutchman |
| 3. All Saints Day or All Hallows Day | 6. Things that go bump in the night | 9. Macbeth |
| | | 10. Adnams |

Visit
KENTWELL

Tudor manor house and country garden

LONG MELFORD CO10 9BA



THU 13 - SAT 22 OCT

SAT 22 - FRI 30 OCT

COMING THIS DECEMBER

What's on at Kentwell?

TICKETS & INFORMATION

www.kentwell.co.uk

WEDDINGS

EDUCATION

CORPORATE EVENTS

Become a Kentwell volunteer →



indigo ross

Spectrum House
Woodhall Business Park
Sudbury Suffolk CO10 1WH

01787 880 260
hello@indigoross.co.uk

indigoross.co.uk

Find us on:



design



print



web

THE
GEORGE & DRAGON



Hotel

15 stylish and comfortable bedrooms, all with TV and tea/coffee making facilities
 Wheelchair access throughout
 Disabled help paging system
 Free wireless internet access

Weddings

Approved marriage and civil partnership venue
 Large gardens ideal for photographs and welcome drinks
 Beautiful marquee with seating for up to 120 guests
 Bespoke menus designed to your taste and budget
 Buffet or full table service
 Evening reception for up to 250 guests
 Preferential rates for accommodation

Events

Private rooms for 30 to 90 guests, ideal for birthdays, engagements, anniversaries, wakes and other events or business meetings

Restaurant and Bar

Freshly cooked food
 Sunday carvery
 Bar meals



Join our local free loyalty club and get up to 25% off your food and drinks.



Hall Street, Long Melford, CO10 9JA
www.thegeorgeanddragonhotel.com
 Telephone: 01787 371285

